

Toyo Ito taps into Australian design market

26 November 2009 | by Gemma Battenbough



Acclaimed Japanese architect, Toyo Ito, has designed a series of conceptual bathroom products using water-worn shapes and flowing lines.

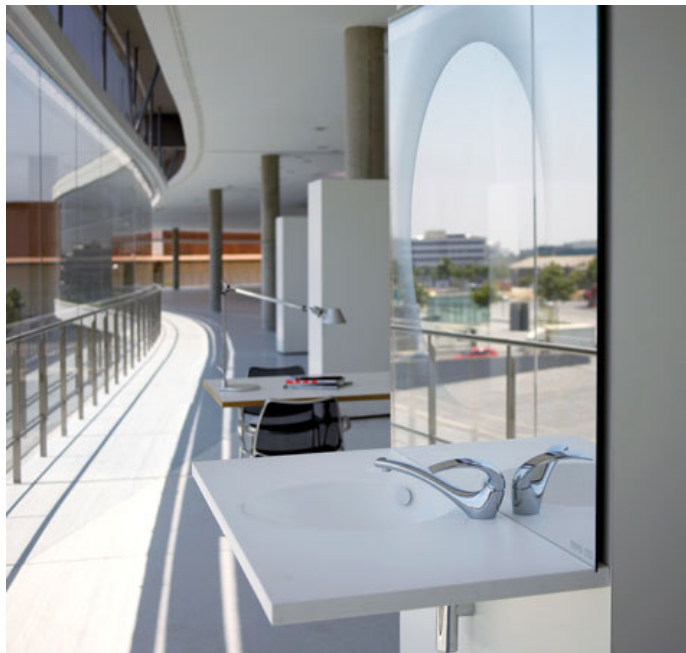
Considered one of the world's most influential architects, Ito has received numerous awards, including the Golden Lion for Lifetime Achievement from the 8th International Architecture Exhibition at the Venice Biennale in 2002, the RIBA Royal Gold Medal in 2006 and Austria's Frederick Kiesler Prize for Architecture and the Arts in 2008.

Ito's design philosophy centres upon the idea of fusing the physical and virtual worlds into functional and lively space.

Wanting to depart from conventional meaning, Ito's bathroom collection for uses "flowing water" as the conceptual jumping off point.

The vanity and basin use smooth, water worn shapes reminiscent of sand by the sea. The Corian surface has a sharp, defined edge near the outlet, which fades away on the sloping side. The soap rest is a simple circle as if a single drop of rain had fallen. The basin mixer is a twisting looping form that arches over the basin as gracefully as a bird.

The Toyo Ito collection is distributed in Australia by Paco Jaanson.



Tags: [architect](#) | [australian](#) | [bathroom](#) | [design](#) | [japanese](#) | [Paco Jaanson](#) | [Toyo Ito](#)

Just in:

[Rant on](#) (2 December 2009)

[World's tallest living wall takes root in Sydney](#) (1 December 2009)