

paco jaanson

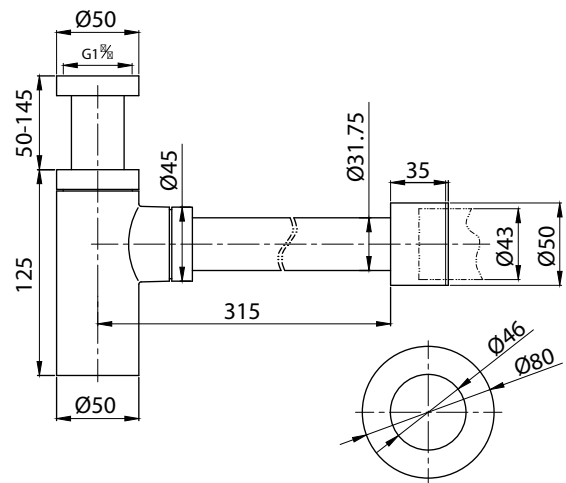
Projection

Short Bottle Trap with 32mm Horizontal Pipe + Adaptor
Product Code: HI-BTRLXL-GM



Dimensions

50mm (w) x Max.375mm (d) x 270mm (h)



DESCRIPTION

This basin Bottle Trap has been built from the best available materials and has been manufactured to the highest Australian and overseas standards.

The Bottle Trap cover makes the exposed plumbing under your basin a designer feature. It is the solution to enhance bathroom looks even under the basin.

The Trap is supplied with maximum length as indicated and can be shortened to minimal adjustments with ease.



Features

Best Suits Wall Hung Basins

32mm Connection to Plug + Waste

95mm Verticle Adjustment

Easy Discharge of Trapped Waste

Sleek Gunmetal Finish

15 Years Limited Manufacturers Warranty

1 Year Limited Commercial Warranty

Water Mark Approved



Also available in Polished Chrome (HI-BTRLXL)

Matt Black (HI-BTRLXL-Black)

Brushed Nickel (HI-BTRLXL-BN)



PRICING STRUCTURE

Retail Pricing:

Gunmetal Finish

\$140.00 gst inclusive

PACO JAANSON BATHROOM INNOVATIONS

Copyright © 2019 All rights reserved. Created 13th May 2021.

Telephone : 1800 006 260

Email - info@pacojaanson.com.au

www.pacojaanson.com.au