

paco jaanson

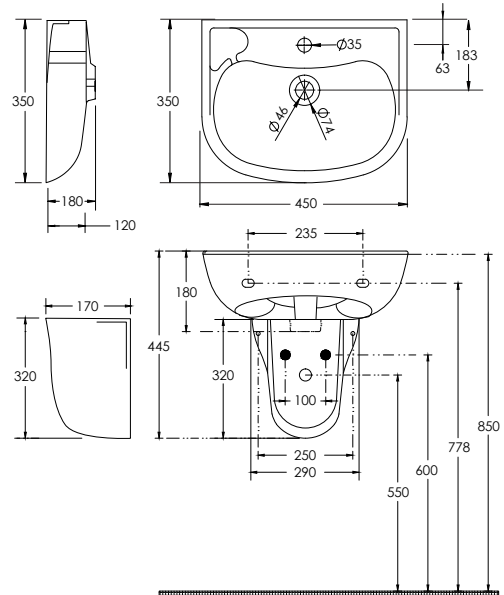
PROJECT WALL BASIN

450mm Wall Mount Ceramic Washbasin - White
Code: ECE3019



Dimensions

450mm (w) x 350mm (d) x 180mm (h)



DESCRIPTION

The Paco Jaanson Care range is committed to providing innovative solutions formed through knowledge and insight to ensure critical living hubs like bathrooms are designed to fully consider the needs of users and their carer's, to maximise independence and a greater degree of user comfort, dignity, respect and safety.

Their aged care and disability solutions are adaptable and allow flexibility when renovations or redesign is being considered. Benelli puts the user first so you can choose Paco Jaanson with confidence.



Features

One tap hole & Overflow supplied standard

Plug and waste not included

Vitreous china

15 Years Limited Manufacturers Warranty

1 Year Limited Commercial Warranty

& Suitable for installation to comply to Australian Standard AS 1428.1-2009 Amendment No.1 Design for access and mobility - Refer to Care Section for further details

Wall fixings included

Shroud Optional Extra - Code: ECE3013

*Additional holes - Optional extra



PRICING STRUCTURE

Retail Pricing:

Basin: ECE3019

\$158.40 gst inclusive

Shroud: ECE3013

\$99.00 gst inclusive

PACO JAANSON BATHROOM INNOVATIONS

Copyright © 2018. All rights reserved. Updated: 17th June 2020.

Telephone : 1800 006 260

Email - info@pacojaanson.com.au

www.pacojaanson.com.au