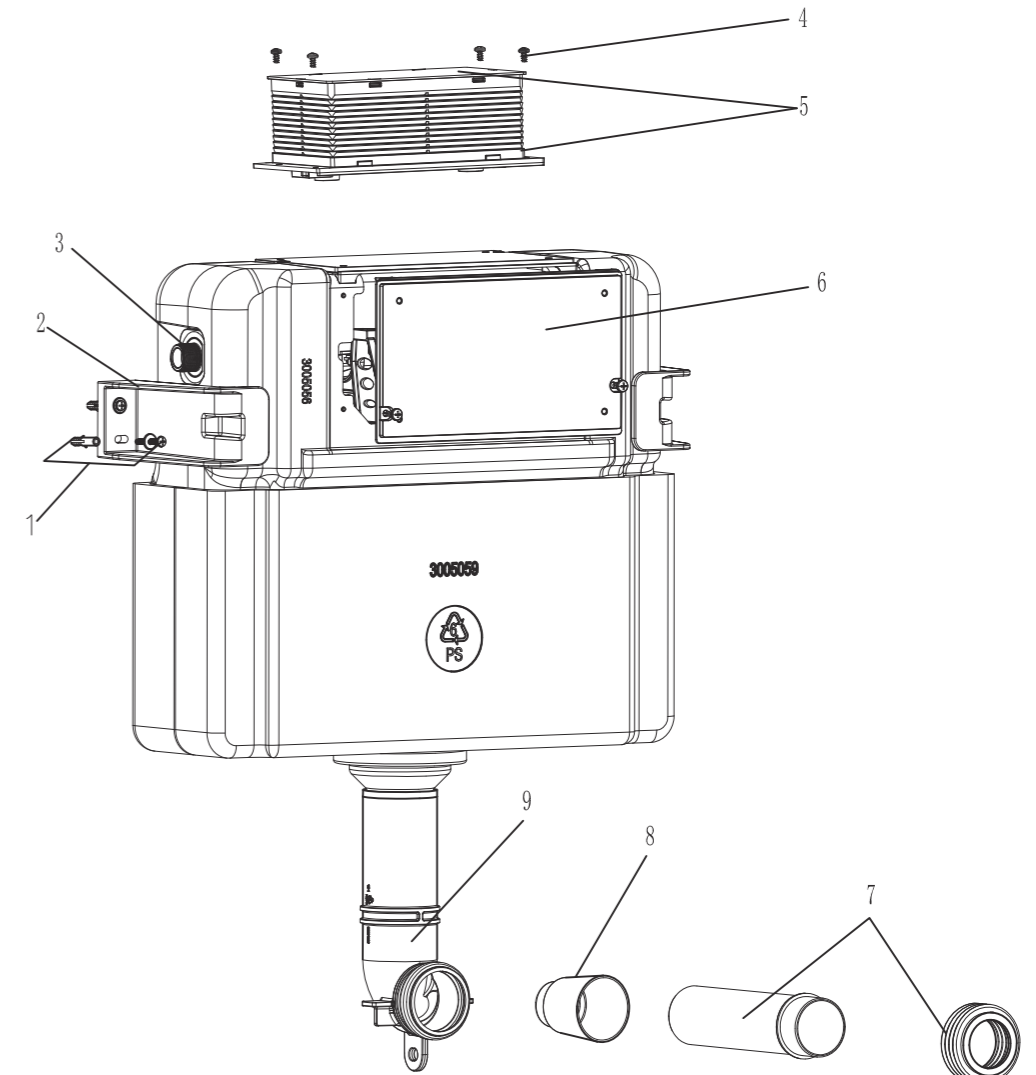


Concealed Cistern

Installation Manual



List of main installation accessories

NO.	Description	Qty	Function
1	Expansion screw	4	Fixation of Cistern
2	Install fixing clip	2	
3	Angle valve	1	Fill valve inlet and shut-off
4	Self-tapping bolt	6	To fix plastic holder and cistern cover
5	Plastic holder	1	To reserve space for installation of actuator at wall building
	Plastic holder cover	1	To prevent dust and impurities into tank at wall building
6	Cistern cover	1	To seal the other window in case of choosing top and front push way so as to avoid dust going into the tank when building the wall
7	Straight tube	1	To joint cistern into ceramic bowl (Cutting in accordance with wall thickness)
8	Piping stopper	1	To reserve space for straight tube and connecting pipe
9	Connecting tube	1	Water inlet pipe to ceramic bowl (Cut based on actual installation height)

Important instruction:

1. Please adhere to the following installation instructions. We shall not be responsible for failures and loss that are contributed to improper installation.
2. Please confirm the fixation location of cistern prior to installation and obtain the finished floor surface. Draw FFL on installation wall and follow it as baseline from ZERO (0) level.
3. The instructions have been composed based in the latest product specifications. We reserve the right to make modifications to the packaging and specifications without providing prior notification.

NOTES:

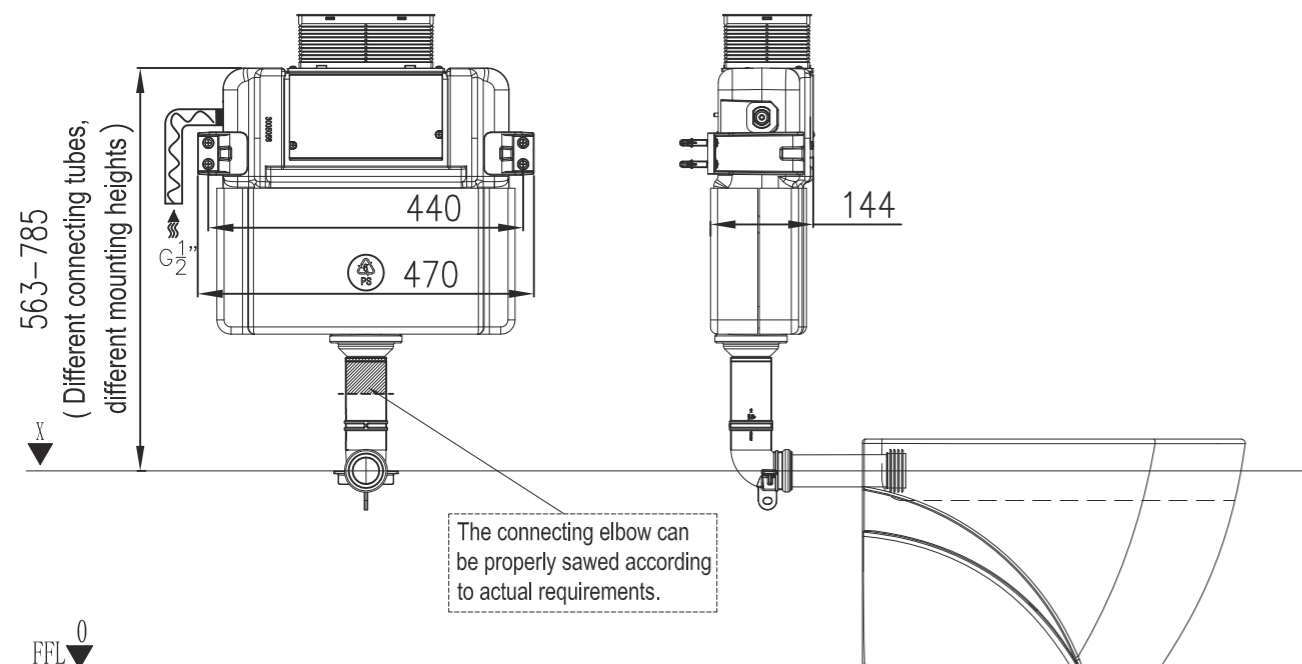
1. Mount before bricks building.
2. All size unit in MM.
3. Follow the material product, should there is an unconformity with drawing.

⚠ FFL 0 = Finished Floor.

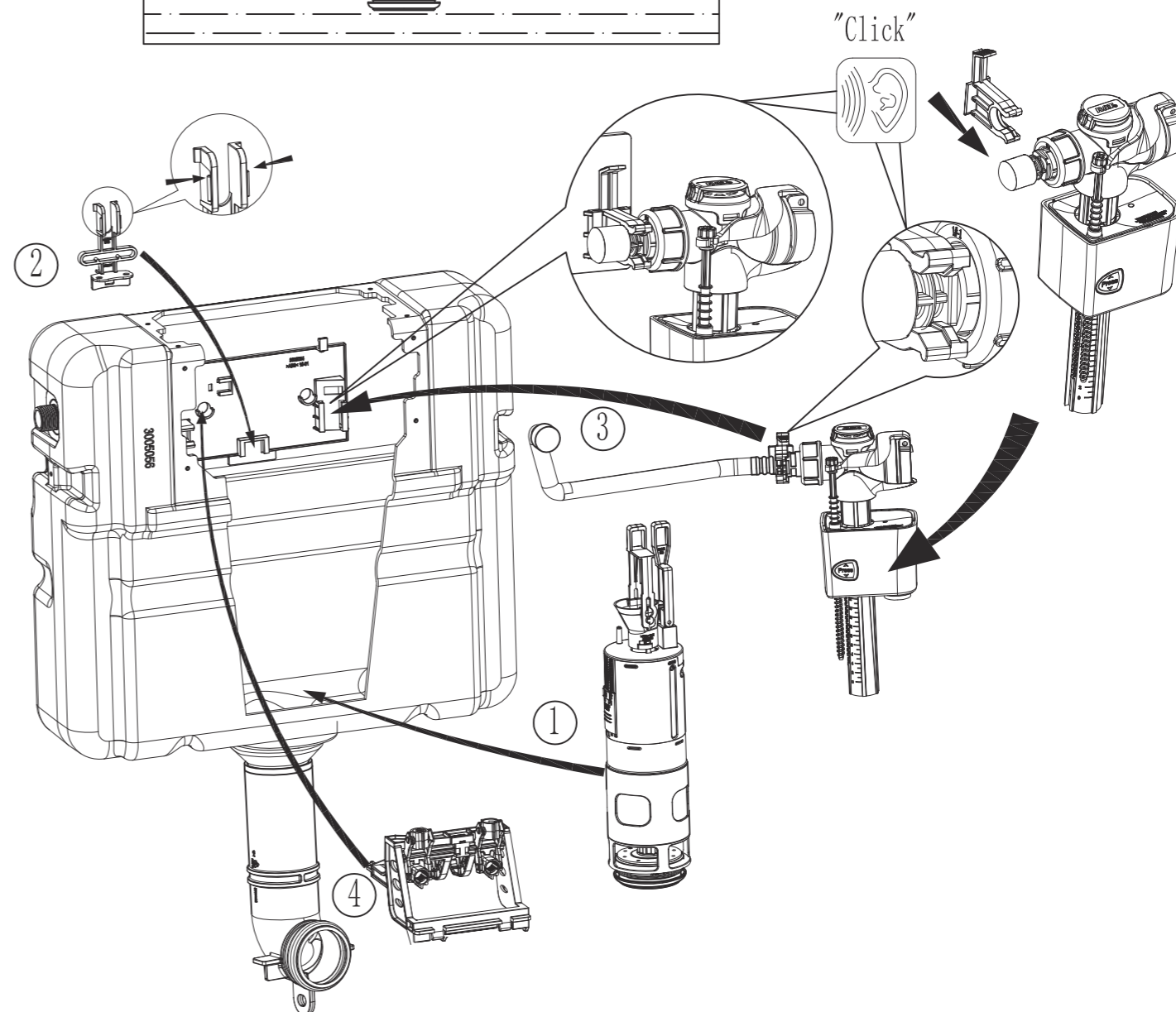
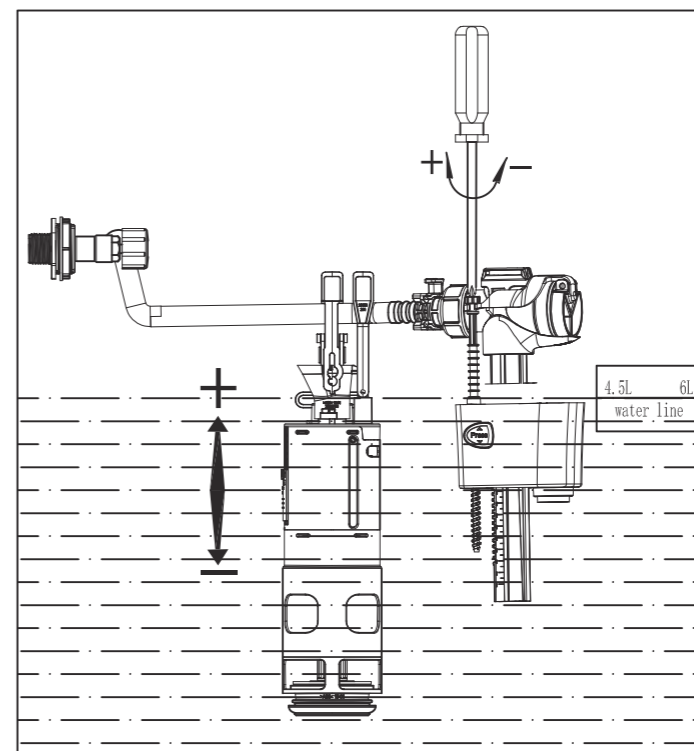
1. General dimension and water supply drawing :

Water supply from side
(water supply should be connected to angle valve inside cistern)

▼ The distance from inlet to FFL 0 line



9. Internal flushing mechanism assembly drawing



The internal flushing mechanism are already well-assembled and above picture only for reference.

8. Mounting of ceramic bowl

① Fully insert the straight tube into cistern flushing outlet.

② Draw the lines as above picture.

③ Insert straight tube into ceramic hole and draw the line.

④ Apply lubricant on joint surface of straight tube and insert the tube into ceramic hole.

⑤ Mounting the ceramic bowl.

⑥ Mounting the ceramic bowl.

⑦ With filter material for the gap of wall and ceramic bowl.

2. Make sure mounting position and drillhole position

▼ The distance from inlet to FFL 0 line

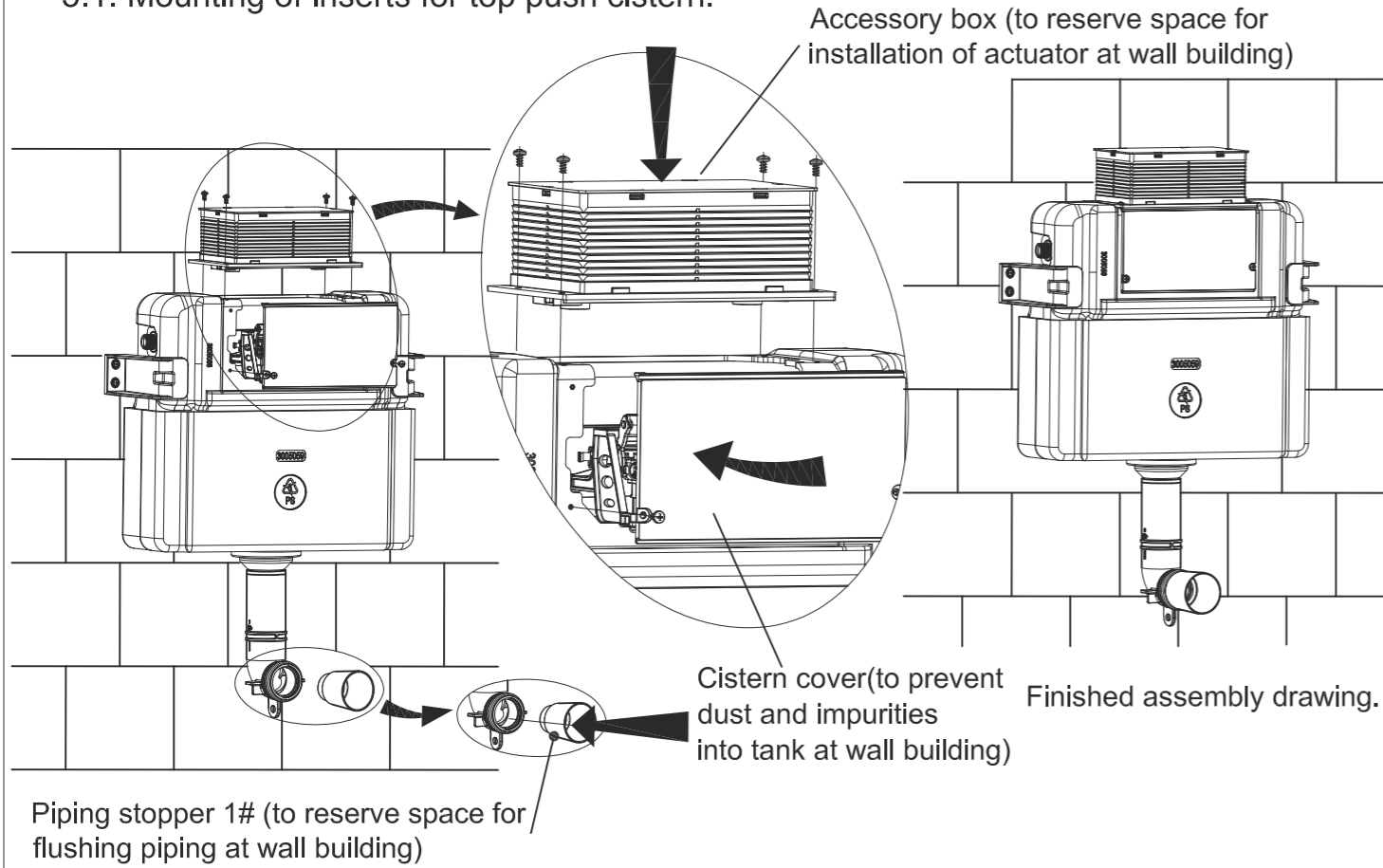
☆Note: Dimension of drillhole according to practical location of cistern.

3. Drill the holes and insert the expansion bolt

4. Mounting cistern

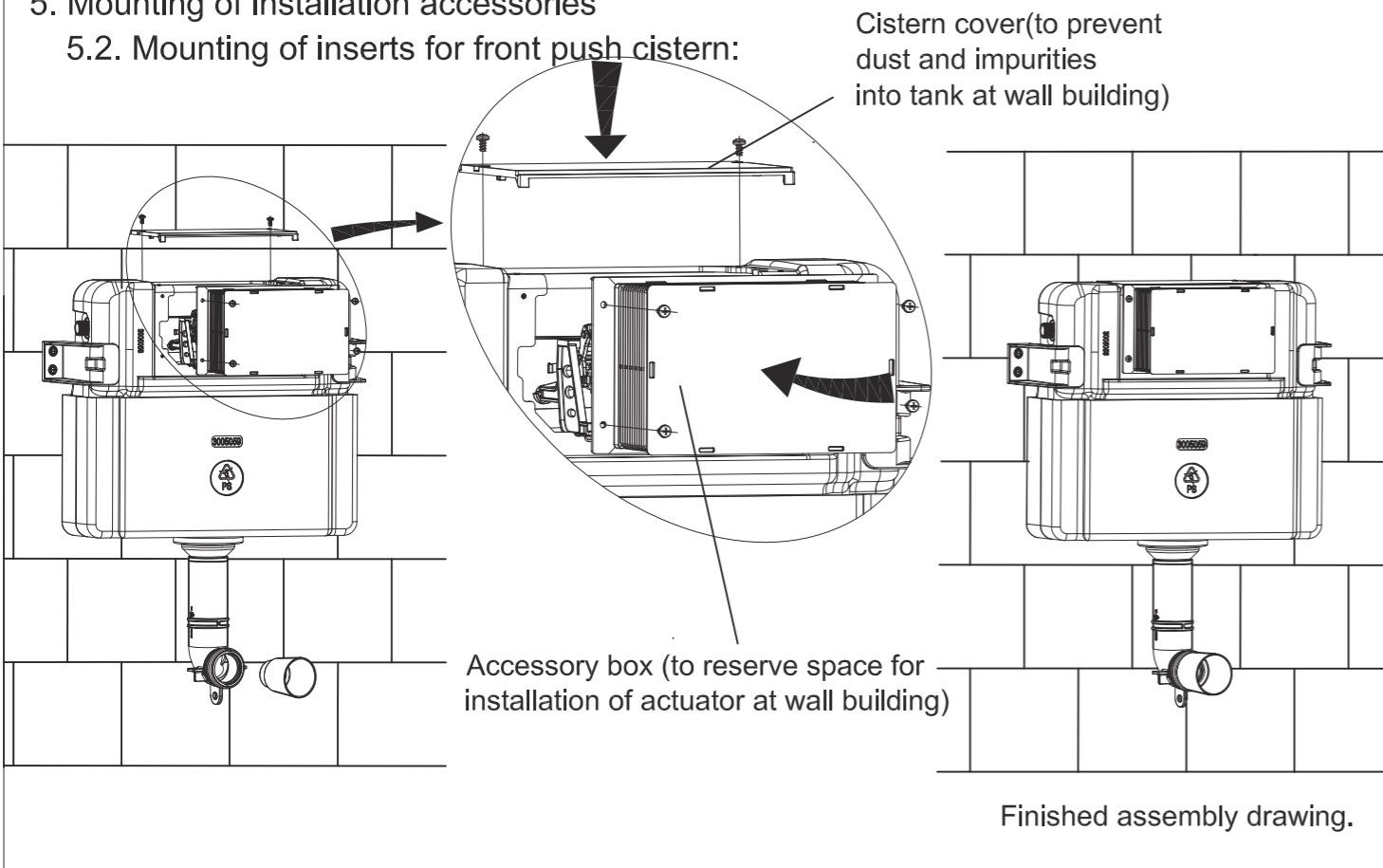
5. Mounting of installation accessories

5.1. Mounting of inserts for top push cistern:

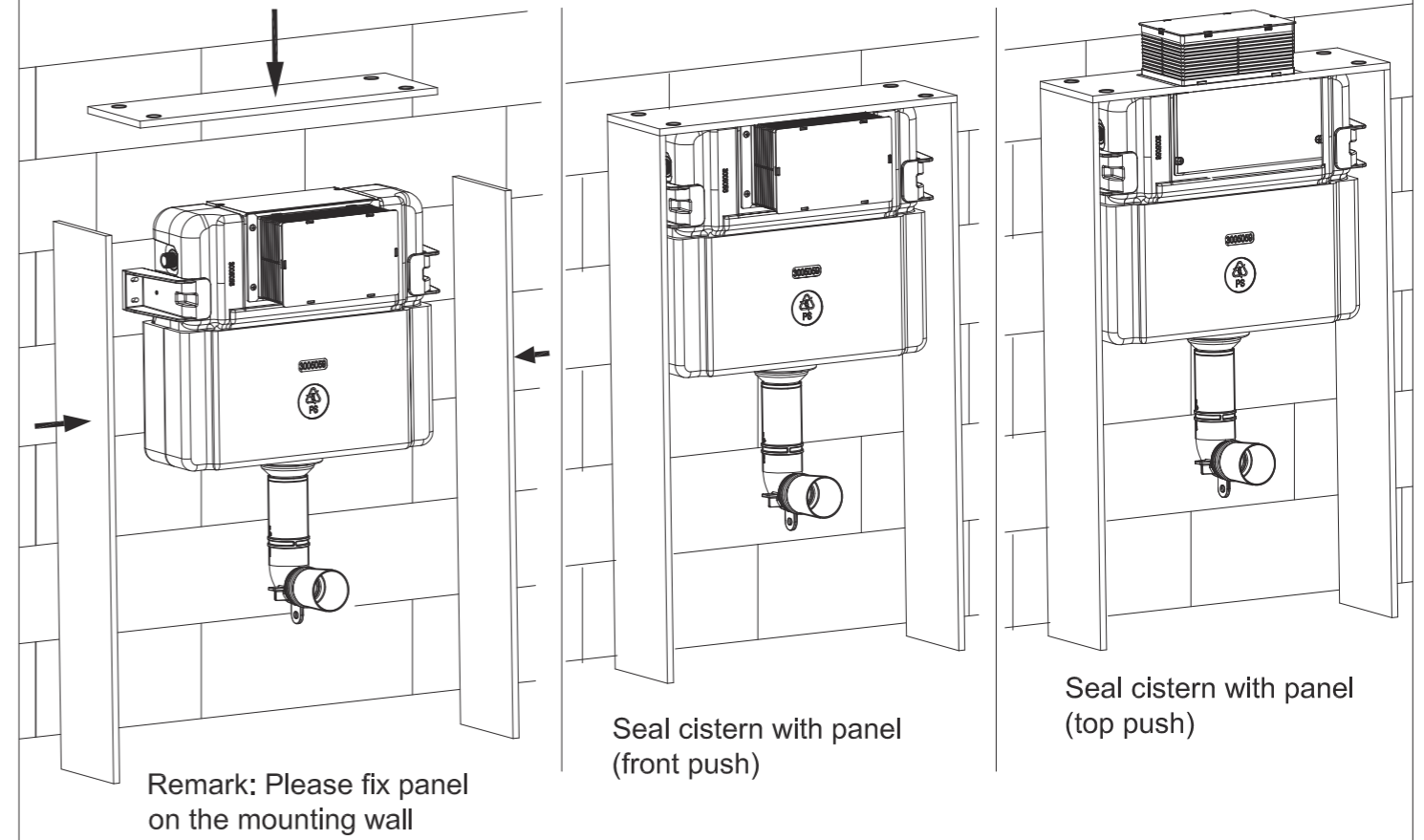


5. Mounting of installation accessories

5.2. Mounting of inserts for front push cistern:



6. Seal cistern with panel to avoid dust going into cistern (panel offered by customers)



7. Wall thickness range 15-70mm (from frame outside surface to finished wall)

